



FESTIVAL PUZZLE CONTEST



Parish Festival

ST. MARY OF THE LAKE

ARE YOU "PUZZLED" ABOUT HOW YOU CAN PARTICIPATE IN THE FUN AT OUR PARISH FESTIVAL SUNDAY, AUGUST 17?

PUZZLE SOLVED!!

**ENTER OUR FABULOUS FESTIVAL
PUZZLE CHALLENGE CONTEST**

ENTRY DETAILS

- Pre-registration and payment required by Sunday, August 10 so we can plan for table space.
- Festival Puzzle Challenge will take place Sunday, August 17 from 1 to 2:30 PM at the Parish Life Center.
- \$60 entry fee per team of up to four members - only \$15 per person!
- Limited to ten teams. The first ten teams to register and pay will be awarded a space.
- Team members should arrive for check-in 15 minutes prior to the Challenge.
- Teams will have 90 minutes to build a 500 piece puzzle. All puzzles are identical.
- The first team to finish or the team with the fewest pieces left after 90 minutes wins the \$120 cash prize.
- Fill out the attached form and return to the parish office with \$60 entry fee.

For questions or to register, contact
Kathy Malek 651.426.1659 or malkabob69@outlook.com.



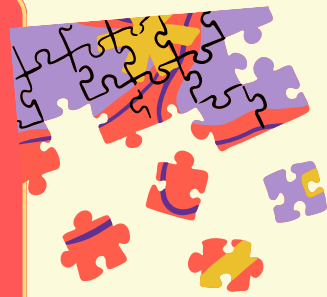


Parish Festival

ST. MARY OF THE LAKE

FESTIVAL PUZZLE CONTEST

PUZZLE ENTRY FORM
LIMITED TO 10 TEAMS OF UP TO 4 MEMBERS
FIRST 10 TEAMS TO REGISTER AND MAKE
PAYMENT WILL BE AWARDED A SPACE



TEAM LEADER _____

TEAM MEMBERS (UP TO 3) _____

TEAM LEADER PHONE/EMAIL _____

RETURN TO PARISH OFFICE WITH \$60 ENTRY FEE

For questions or to register, contact
Kathy Malek 651.426.1659 or malkabob69@outlook.com.

